



**EXTREM' VISION**

**SOLUTION CREATOR  
SINCE 1996**

MADE IN FRANCE

# — RAID LIGHTING —

Tactical lighting glare and systems



White LED – IR LED – Visible laser – IR laser

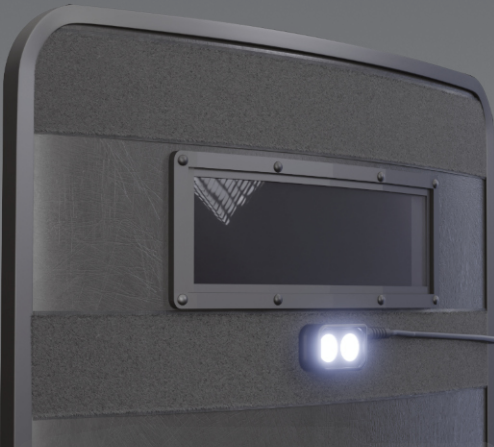


μRL (Micro RL)

# ROBUST SIMPLE EFFECTIVE



ENS RL 12 (B2LI)



Fully approved by the units  
For over 10 years

# — RAID LIGHTING —

Tactical systems used day and night, in visible or invisible mode, with laser pointer options.  
Adds value to the assault column equipped with ballistic shields.

We guarantee you maximum longevity of use thanks to our expertise in study, manufacturing, and long term after-sales service carried out within our company.

Simulation of various lighting options on our configurator : [www.extrem-vision.com](http://www.extrem-vision.com)

## White LED



## White LED + IR LED + lasers



Transport case µRL

Example of  
equipment provided



Transport case with foam (option)



EXTREM' VISION

Espace OPTIMUS, 3 avenue Gustave Eiffel, 66600 Rivesaltes (France)  
+33 (0) 4 68 55 51 55 - [contact@extrem-vision.com](mailto:contact@extrem-vision.com) - [www.extrem-vision.com](http://www.extrem-vision.com)